

Datasheet

CFN Series

Available Distribution



35°x155° 60°x155° 70°x150° 90°x150° 110°x150°

Dimensions

Part Number	Height	LxW
LL04CR-CFN35155L02	6.47	
LL04CR-CFN60155L02	7.3	
LL04LU-CFN70150L06	5.82	50x50
LL04LU-CFN90150L06	5.72	
LL04LU-CFN110150L06	5.76	

*All dimensions are in millimeters.

LED



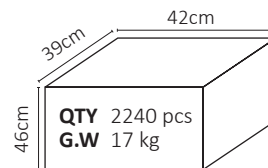
LUMILEDS
LUXEON 5050

CREE
XPL-HD

CREE
JR5050 K
class 6V

CREE
JR5050 P
class 6V

Packaging Details (SPQ)





Recommand Applications



Street

General Information

PMMA 70°C -40°C	PC 110°C -40°C	PMMA 8N HB 1.5mm RTI 90°C	PC LEV1700K V-2 1.5mm RTI 130°C	400nm~900nm > 90%		
-----------------------	----------------------	---------------------------------	---------------------------------------	----------------------	---	---

- Lens Material L06: PMMA 8N / L02: PC LEV1700KL
- Operating Temperature PMMA: -40°C~+70°C / PC: -40°C~+110°C
- UL Flammability PMMA: HB / PC LEV1700KL: V-2@1.5mm
- UL RTI Elec PMMA: 90°C / PC LEV1700KL: 130°C@1.5mm
- Light Transmission Rate 400nm~900nm > 90%
- ☑ If necessary, Clean lenses with mild soap, water and soft cloth.
- ⚠ Never use any commercial cleaning solvents on lenses, like alcohol.
- ⚠ Please handle or install lenses with wearing gloves, skin oils may damage lens or its optical characteristic.

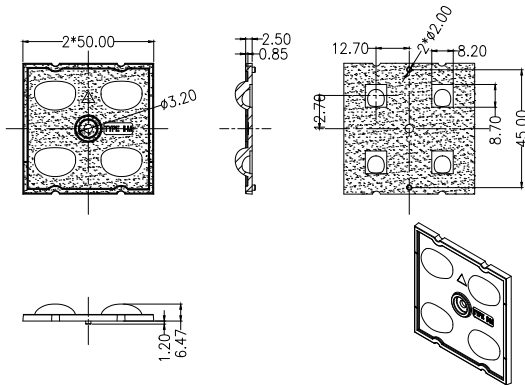
Mechanical Specification

*All dimensions are in millimeters.

Lens Dimension



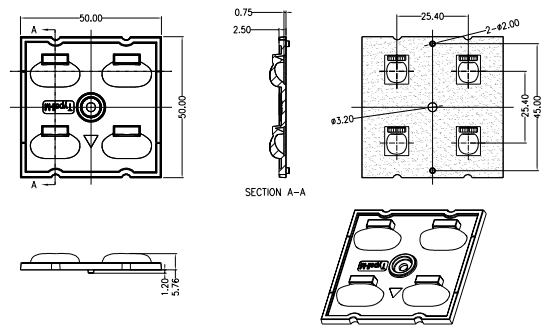
LL04CR-CFN××L02



Lens Dimension



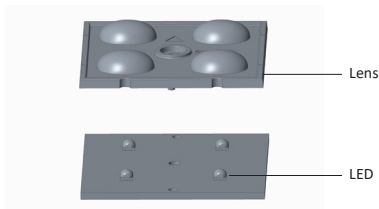
LL04LU-CFN××L06



Assembly Instruction

Fixing Method

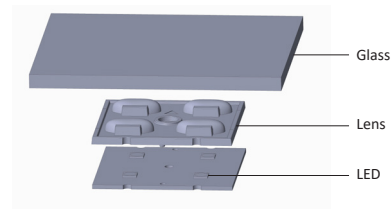
Part No LL04CR-CFN××L02



Assembly Instruction

Fixing Method

Part No LL04LU-CFN××L06



The height of the glass is 5mm.
Place the bottom of the glass above the top of the PCB with distance 16mm.

DIALux Simulation Result

LL04CR-CFN35155L02

LED Recommend Configuration Condition



Height	10 M
Distance	35 M
Roadwidth	10.5M / 3 Lines of the Road
Elevation	0°
Overhang	1

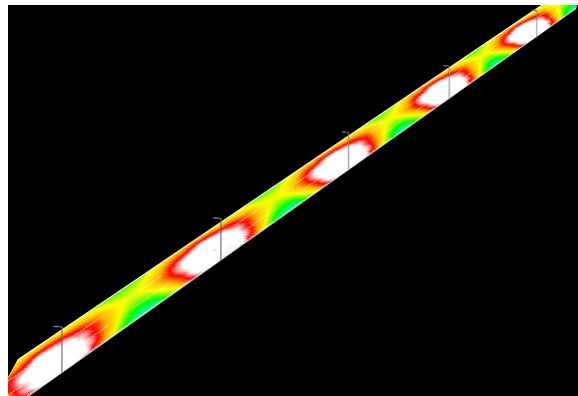
Result

U0	0.6
UI	0.7
TI	12
SR	0.6
Specification	Brightness

The Standard

Type II-S

* The results would be similar if the configuration conditions are equally magnified or minified.



LED Recommend Configuration Condition



Height	10 M
Distance	35 M
Roadwidth	10.5M / 3 Lines of the Road
Elevation	0°
Overhang	1

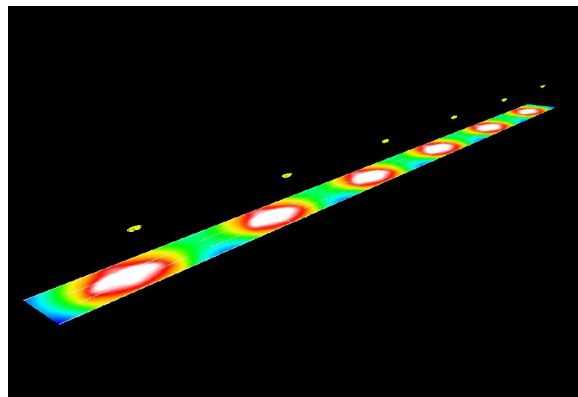
Result

U0	0.60
UI	0.75
TI	9
SR	0.58
Specification	Brightness

The Standard

Type III S SEMI CUTOFF

* The results would be similar if the configuration conditions are equally magnified or minified.



LED Recommend Configuration Condition



Height	10 M
Distance	35 M
Roadwidth	10.5M / 3 Lines of the Road
Elevation	0°
Overhang	1

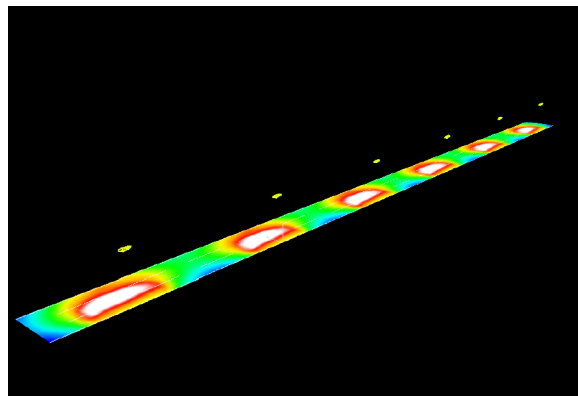
Result

U0	0.62
UI	0.58
TI	8
SR	0.61
Specification	Brightness

The Standard

Type III S CUTOFF

* The results would be similar if the configuration conditions are equally magnified or minified.



DIALux Simulation Result

LL04CR-CFN60155L02

LED Recommend Configuration Condition



Height	10 M
Distance	40 M
Roadwidth	14M / 4 Lines of the Road
Elevation	0°
Overhang	1

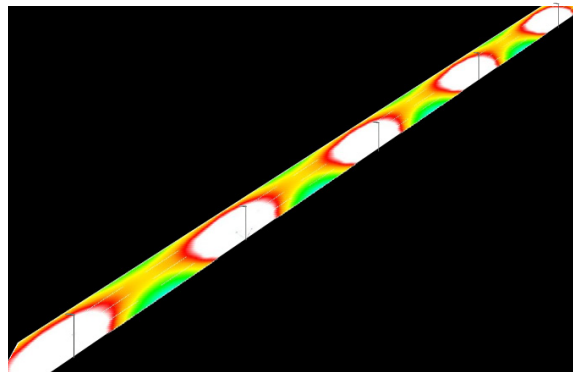
Result

U0	0.4
UI	0.7
TI	14
SR	0.6
Specification	Brightness

The Standard

Type III-M

* The results would be similar if the configuration conditions are equally magnified or minified.



LED Recommend Configuration Condition



Height	10 M
Distance	35 M
Roadwidth	10.5M / 3 Lines of the Road
Elevation	0°
Overhang	1

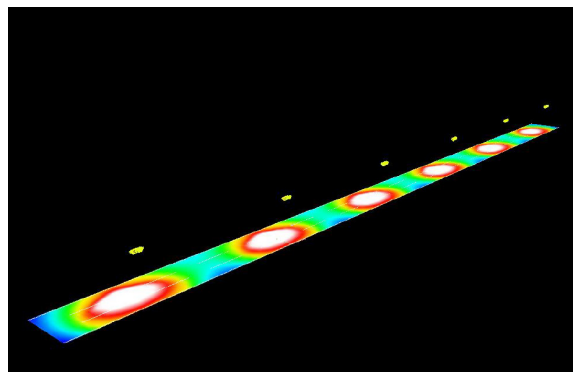
Result

U0	0.54
UI	0.73
TI	8
SR	0.55
Specification	Brightness

The Standard

Type III S CUTOFF

* The results would be similar if the configuration conditions are equally magnified or minified.



LED Recommend Configuration Condition



Height	10 M
Distance	35 M
Roadwidth	10.5M / 3 Lines of the Road
Elevation	0°
Overhang	1

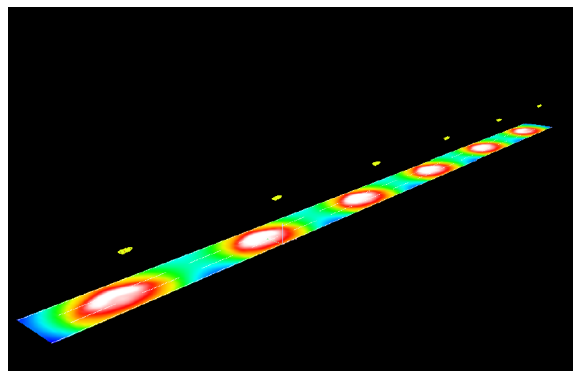
Result

U0	0.57
UI	0.71
TI	6
SR	0.62
Specification	Brightness

The Standard

Type III S CUTOFF

* The results would be similar if the configuration conditions are equally magnified or minified.



DIALux Simulation Result

LL04LU-CFN70150L06

LED Recommend Configuration Condition



Height	10 M
Distance	35 M
Roadwidth	10.5M / 3 Lines of the Road
Elevation	0°
Overhang	1

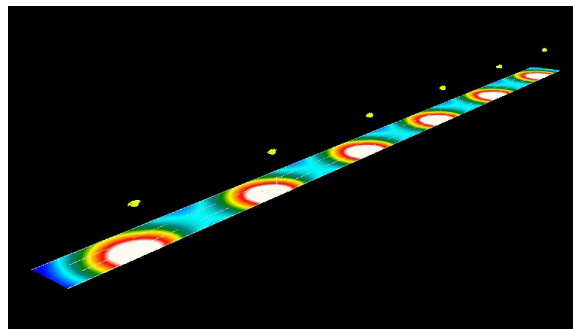
Result

U0	0.42
UI	0.68
TI	12
SR	0.7
Specification	Brightness

The Standard

Type III-M CUTOFF (With Glass)

* The results would be similar if the configuration conditions are equally magnified or minified.



LED Recommend Configuration Condition



Height	10 M
Distance	35 M
Roadwidth	10.5M / 3 Lines of the Road
Elevation	0°
Overhang	1

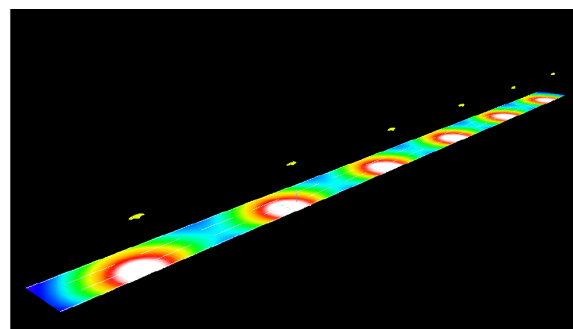
Result

U0	0.41
UI	0.78
TI	15
SR	0.66
Specification	Brightness

The Standard

Type III M SEMI CUTOFF

* The results would be similar if the configuration conditions are equally magnified or minified.



LED Recommend Configuration Condition



Height	10 M
Distance	35 M
Roadwidth	10.5M / 3 Lines of the Road
Elevation	0°
Overhang	1

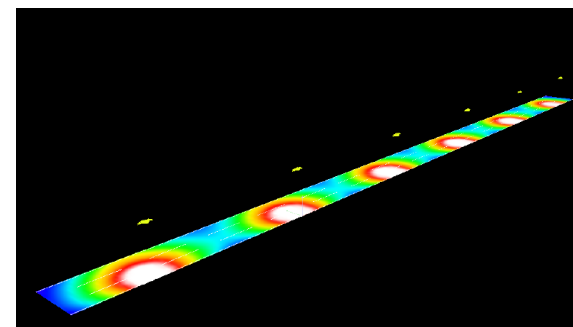
Result

U0	0.42
UI	0.77
TI	15
SR	0.67
Specification	Brightness

The Standard

Type III M NON CUTOFF

* The results would be similar if the configuration conditions are equally magnified or minified.



DIALux Simulation Result

LL04LU-CFN90150L06

LED Recommend Configuration Condition



Height	10 M
Distance	35 M
Roadwidth	10.5M / 3 Lines of the Road
Elevation	0°
Overhang	1

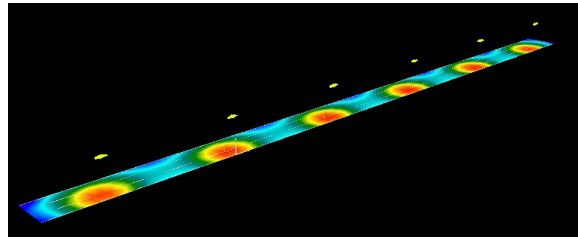
Result

U0	0.42
UI	0.71
TI	12
SR	0.6
Specification	Brightness

The Standard

Type II-M CUTOFF (With Glass)

* The results would be similar if the configuration conditions are equally magnified or minified.



LED Recommend Configuration Condition



Height	10 M
Distance	35 M
Roadwidth	10.5M / 3 Lines of the Road
Elevation	0°
Overhang	1

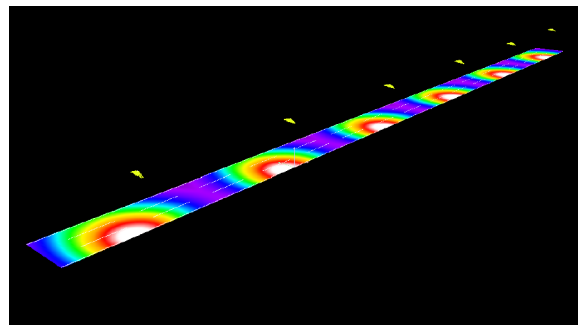
Result

U0	0.23
UI	0.20
TI	3
SR	0.26
Specification	Brightness

The Standard

Type I-M SEMICUTOFF

* The results would be similar if the configuration conditions are equally magnified or minified.



LED Recommend Configuration Condition



Height	10 M
Distance	35 M
Roadwidth	10.5M / 3 Lines of the Road
Elevation	0°
Overhang	1

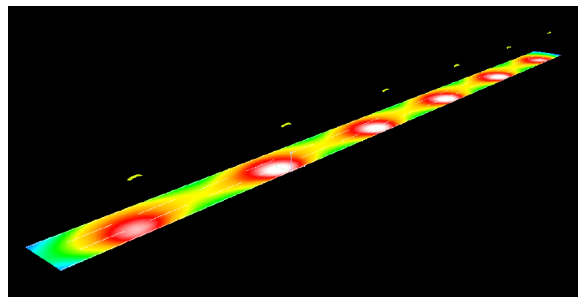
Result

U0	0.46
UI	0.59
TI	16
SR	0.71
Specification	Brightness

The Standard

Type II M SEMI CUTOFF

* The results would be similar if the configuration conditions are equally magnified or minified.



DIALux Simulation Result

LL04LU-CFN110150L06

LED Recommend Configuration Condition



Height	9 M
Distance	35 M
Roadwidth	10.5M / 3 Lines of the Road
Elevation	5°
Overhang	1.9

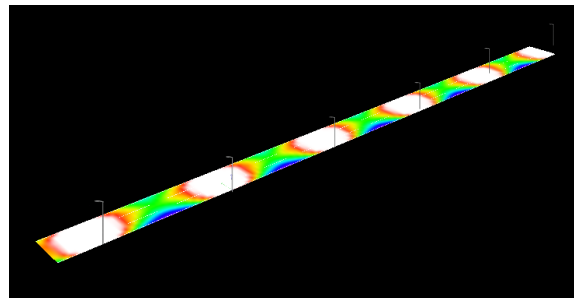
Result

U0	0.34
UI	0.65
TI	12
SR	0.47
Specification	Brightness

The Standard

Type II-M CUTOFF (With Glass)

* The results would be similar if the configuration conditions are equally magnified or minified.



LED Recommend Configuration Condition



Height	9 M
Distance	35 M
Roadwidth	10.5M / 3 Lines of the Road
Elevation	0°
Overhang	1.9

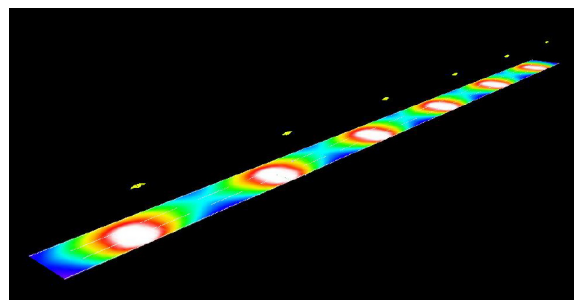
Result

U0	0.46
UI	0.68
TI	14
SR	0.74
Specification	Brightness

The Standard

Type II M SEMI CUTOFF

* The results would be similar if the configuration conditions are equally magnified or minified.



LED Recommend Configuration Condition



Height	9 M
Distance	35 M
Roadwidth	10.5M / 3 Lines of the Road
Elevation	0°
Overhang	1.9

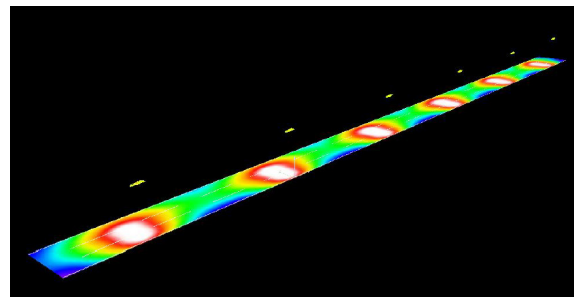
Result

U0	0.51
UI	0.65
TI	13
SR	0.78
Specification	Brightness

The Standard

Type II M SEMI CUTOFF

* The results would be similar if the configuration conditions are equally magnified or minified.






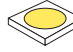


Photometric Distribution













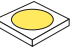








LED

Beam Angle	CREE XPL-HD	LUMILEDS LUXEON 5050	CREE JR5050 K class 6V	CREE JR5050 P class 6V
35°x155°		-		
60°x155°		-		
70°x150°	-			
90°x150°	-			
110°x150°	-			

Details by LED

Part No	Accessories	LED Package Size	LED		
LL04CR-CFNxxL02	-	3535 / 5050	 CREE XPL-HD	 CREE JR5050 K class 6V	 CREE JR5050 P class 6V
LL04LU-CFNxxL06	-	5050	 LUMILEDS LUXEON 5050	 CREE JR5050 K class 6V	 CREE JR5050 P class 6V

LED	Part No	Type	FWHM	cd / lm	IES
 CREE XPL-HD	LL04CR-CFN35155L02	II-Medium	75°x152°	0.6	
	LL04CR-CFN60155L02	III-Medium	52°x151°	0.5	
	LL04LU-CFN70150L06	-	-	-	-
	LL04LU-CFN90150L06	-	-	-	-
	LL04LU-CFN110150L06	-	-	-	-
 LUMILEDS LUXEON 5050	LL04CR-CFN35155L02	-	-	-	-
	LL04CR-CFN60155L02	-	-	-	-
	LL04LU-CFN70150L06	III-Medium	121°x151°	0.3	
	LL04LU-CFN90150L06	III-Medium	109°x150°	0.4	
 CREE JR5050 K class 6V	LL04LU-CFN110150L06	II-Medium	72°x147°	0.4	
	LL04CR-CFN35155L02	III Short	53°x148°	0.3	
	LL04CR-CFN60155L02	III Short	60°x147°	0.3	
	LL04LU-CFN70150L06	II-Medium	70°x150°	0.5	
	LL04LU-CFN90150L06	I-Medium	106°x154°	0.5	
 CREE JR5050 P class 6V	LL04LU-CFN110150L06	II-Medium	70°x150°	0.5	
	LL04CR-CFN35155L02	III Short	54°x143°	0.4	
	LL04CR-CFN60155L02	III Short	57°x147°	0.3	
	LL04LU-CFN70150L06	III-Medium	120°x155°	0.5	
	LL04LU-CFN90150L06	II-Medium	107°x151°	0.6	
	LL04LU-CFN110150L06	II-Medium	64°x146°	0.6	

Product Nomenclature

Ledlink Led Type Lens Angle

LL 04 LU -CFN 70150 L06

Lens Dot Number Serial Number Type of Material

Ledlink Optics, Inc

Taiwan HQ

15F, No.655, Bannan Rd., Chung-Ho Dist.,
New Taipei City, Taiwan 235

Ledlink Optics (Dongguan) Co., Ltd

Dongguan Factory

No.5, TianKeng Industrial Dist., HengLiTown, DongGuan City,
GuangDong Province, China 523478

Ledlink Optics (Yangzhou) Co., Ltd

Yangzhou Factory

No.180, LinJiang Rd., YangZhou City, Jiangsu Province, China 225009

www.ledlink-optics.com

service@ledlink-optics.com

